

**NORTHWOOD FOURTH ADDITION – PHASE 2
DIVISION 2 - STORM SEWER & PAVING IMPROVEMENTS
DENISON, IOWA**

**Bids shall be received until 12:00 o'clock noon on June 30, 2006 at
Bohlmann Inc. Office
2302 Yellow Smoke Road
Denison, Iowa**

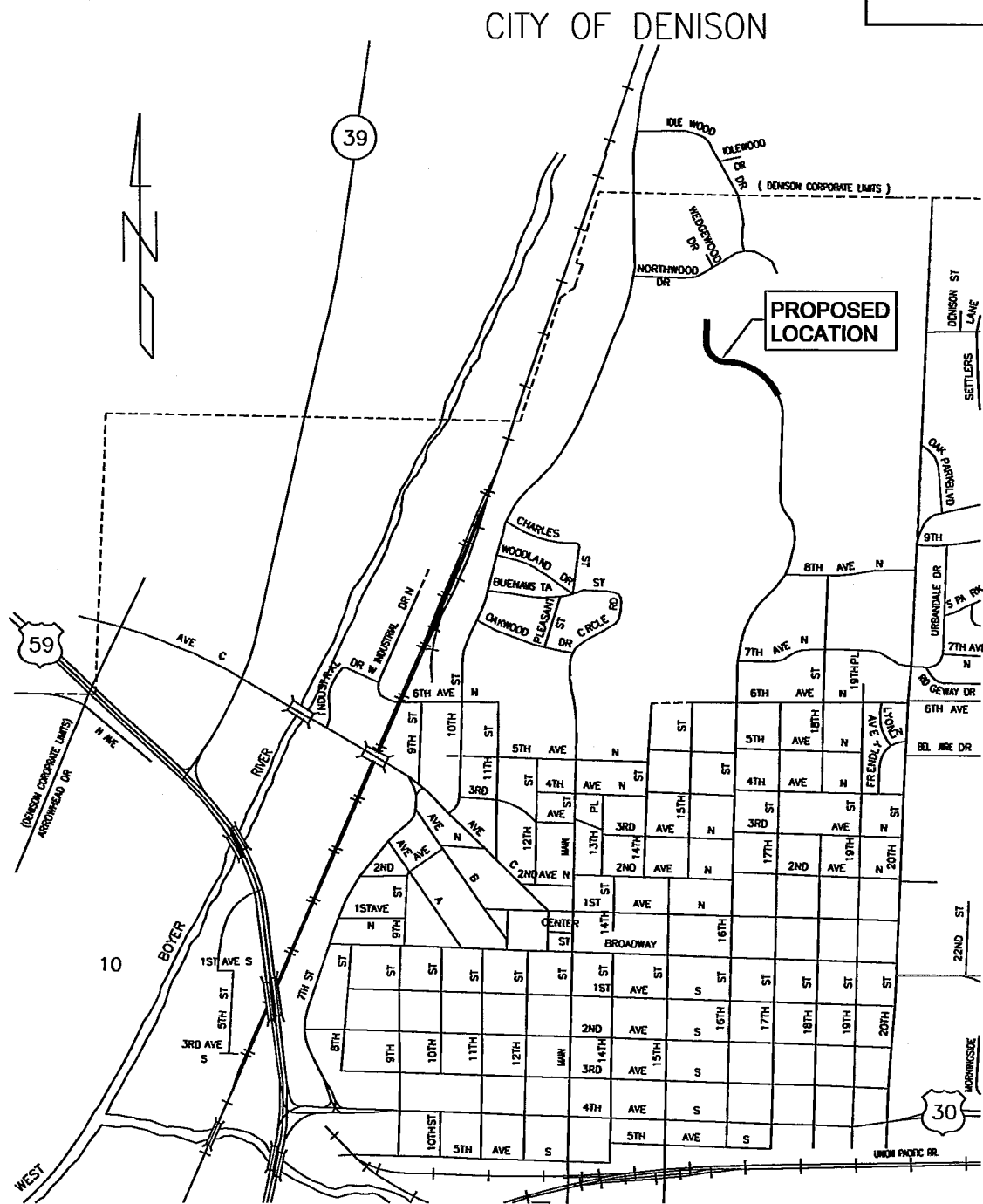
**Plans are available at the office of the Engineer for a deposit of \$25.00 (non-refundable) at
Sundquist Engineering, P.C.
120 South Main
P.O. Box 220
Denison, Iowa 51442**

If you are interested in a set of Plans and Specs please call our office at 712-263-8118

CONSTRUCTION PLANS FOR: NORTHWOOD FOURTH ADDITION - PHASE 2 - LOTS 8-14 DIVISION 2 - STORM SEWER AND PAVING IMPROVEMENTS DENISON, IOWA

The Iowa Department of Transportation Standard Specifications for Highway and Bridge Construction, series of 2001, plus current Supplemental Specifications and Special Provisions shall apply to construction work on this project.

Scales: As Noted



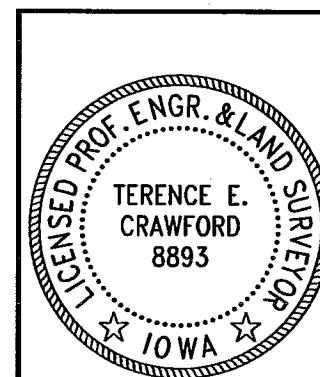
INDEX OF SHEETS

NO.	DESCRIPTION
A1	TITLE SHEET
B1	ESTIMATED PROJECT QUANTITIES
B2-B3	ESTIMATE REFERENCE INFORMATION
B4-B5	GENERAL NOTES
C1	TYPICAL SECTION
D1-D3	PLAN AND PROFILE
L1-L2	PAVEMENT JOINT LAYOUT
W1-W3	CROSS SECTIONS

ROAD STANDARD PLANS

The following Standard Plans shall be considered applicable to construction work on this project.

Identification	Date	Identification	Date	Identification	Date
RB-6	04-19-05	RF-26	04-15-03	RH-52	04-18-06
RF-1	04-03-01	RF-30A	10-18-06	RL-9	10-21-03
RF-2	09-21-99	RF-32	04-18-06	RS-2	10-27-98
RF-3	10-03-00	RH-22	04-18-06	RS-26B	10-28-97
RF-5	10-03-00	RH-50	04-18-06		
RF-14	10-18-05	RH-51	04-20-04		



I HEREBY CERTIFY THAT THIS ENGINEERING DOCUMENT WAS PREPARED BY ME OR UNDER MY DIRECT PERSONAL SUPERVISION AND THAT I AM A DULY LICENSED PROFESSIONAL ENGINEER UNDER THE LAWS OF THE STATE OF IOWA.

TERENCE E. CRAWFORD, P.E. & P.L.S. NO. 8893 DATE _____

MY LICENSE RENEWAL DATE IS DECEMBER 31, 2007.

PAGES OR SHEETS COVERED BY THIS SEAL: ALL

REV.:

SUNDQUIST ENGINEERING, P.C.
CONSULTING ENGINEERS

HIGHWAYS • MUNICIPAL • MAPPING • SURVEYING
120 S. MAIN, P.O. BOX 220, DENISON, IOWA 51442
PHONE: (712)263-8118 FAX: (712)263-2181

SE PROJECT NO.: 04306 DATE: 04/06 DRAWN BY: LLL REVIEWED BY: TEC APPROVED BY: TEC

CLIENT: DENISON COMMUNITY SCHOOLS/BOHLMANN DESCRIPTION: TITLE SHEET

SHEET AI

DIVISION 2 - STORM SEWER & PAVING IMPROVEMENTS

ESTIMATED PROJECT QUANTITIES				
ITEM NO.	ITEM	UNIT	QUANTITIES	
			ESTIMATED	AS BUILT
1	EXCAVATION, CLASS 10, ROADWAY AND BORROW	CY	600	
2	TOPSOIL, RESPREADING ONLY	CY	500	
3	SPECIAL COMPACTION OF SUBGRADE	STA	11.3	
4	STD. OR SLIP-FORM P.C. CONC. PAVEMENT, CL. C, CL. 3 DURABILITY, 7 IN.	SY	3260	
5	PORTLAND CEMENT CONCRETE PAVEMENT SAMPLES	LS	1	
6	SAFETY CLOSURE	EACH	2	
7	TRAFFIC CONTROL	LS	1	
8	MOBILIZATION	LS	1	
9	SEWER, 2000D STORM, 12 IN. DIA. RCP	LF	71	
10	SEWER, 2000D STORM, 15 IN. DIA. RCP	LF	244	
11	SEWER, 1500D STORM, 18 IN. DIA. RCP	LF	25	
12	APRON, CONCRETE PIPE, 12 IN. DIA.	EACH	1	
13	APRON, CONCRETE PIPE, 18 IN. DIA.	EACH	1	
14	APRON, METAL, 18 IN. DIA.	EACH	1	
15	SEWER PIPE, CORRUGATED METAL STORM, 15 IN. DIA.	LF	195	
16	SEWER, PIPE, CORRUGATED METAL STORM, 18 IN. DIA.	LF	165	
17	JUNCTION MANHOLE, STORM SEWER, 48 IN. DIA. STD. REINF. CONC.	EACH	1	
18	UTILITY ACCESS, STORM SEWER, RA-49 MODIFIED	EACH	1	
19	UTILITY ACCESS, STORM SEWER, RA-49 W/GRATE INLET ON TOP	EACH	1	
20	UTILITY ACCESS, STORM SEWER, RA-49	EACH	2	
21	INTAKE, STORM SEWER, RA-40	EACH	3	
22	MULCHING	ACRE	0.9	
23	SEEDING AND FERTILIZING	ACRE	0.9	
24	SURFACING, CLASS A CRUSHED STONE	TON	180	